



**INTERIOR DESIGNER /
JANE-MARIE BLOOMBERG,
EMBELLISHMENTS DESIGN STUDIO**

Jane-Marie Bloomberg draws on her business and finance background to make the most of her clients' budgets, and keep their projects right on schedule. She won't skimp on style either—one of her specialties is made-to-measure window treatments. "Window treatments can be very tricky, but are so important to a room's design," she says. Her system allows clients to preview the custom design in their chosen fabric on their own window before it's made, so everyone is delighted with the final product. 6766 Woodland Drive, Eden Prairie; 612.251.6512; embellishmentsdesign.com —BK
RUNNERS UP / Heidi Dockter at Gabbert's, Devane Design

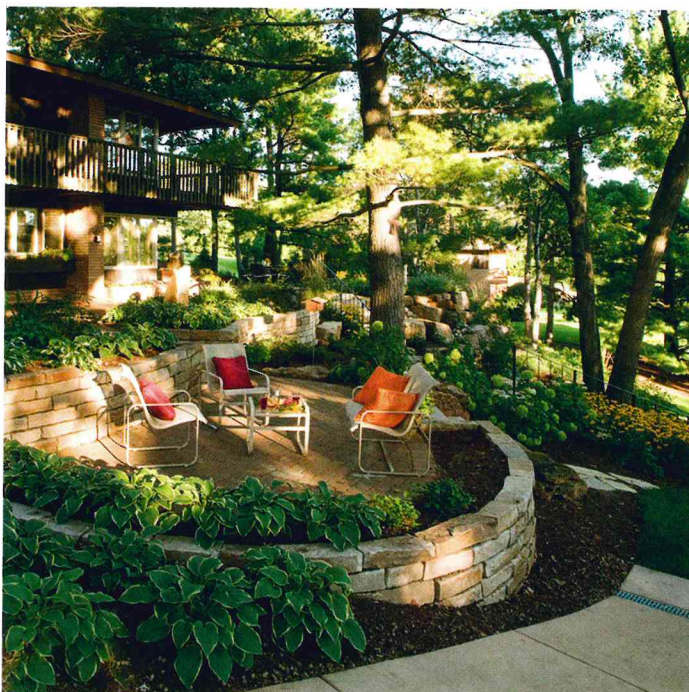
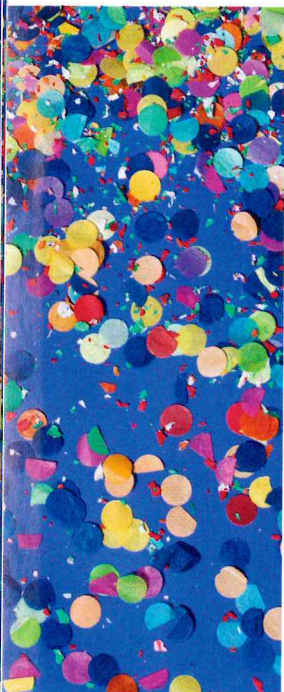
**GARDEN INSPIRATION / MINNESOTA
LANDSCAPE ARBORETUM**

It could be argued that capturing the beauty of the gardens at the Minnesota Landscape Arboretum is completely unattainable for the home gardener—after all, most of us don't have a staff dedicated to maintaining our "grounds." But the professionals at the arboretum are willing to share their knowledge.

The arboretum offers classes on everything from flower arrangement to plant propagation. A few years ago, I was lucky enough to take a class on shade gardening from Duane Otto, the arboretum's landscape gardener, and I still look through the notes I took in that class as I make plans for my garden.



Don't have time for class? A stroll through the arboretum's grounds can provide inspiration for plant selection (most plants are clearly labeled), as well as artful arrangements. Just make sure to bring your notebook. 3675 Arboretum Drive, Chanhassen; 952.443.1400; arboretum.umn.edu —LP



**LANDSCAPER /
SOUTHVIEW DESIGN**

Southview Design began in 1978, so they bring experience and know-how to your project. With a rich knowledge of the plant life in Minnesota, as well as the demanding local weather conditions, they never shy away from a challenge. "We've built a reputation for excellence tackling difficult projects, like building patios and pools on steep slopes and making the most of small spaces," Karen Filloon says. "Our landscape teams excel at translating our homeowner's dreams into functional, beautiful outdoor spaces." 275 Market St. Ste. C24, Minneapolis; 952.881.2296; southviewdesign.com —BK
RUNNERS UP / The Mustard Seed, By the Woods